

Model

- FLF110PM is a non-refrigerated stainless steel drinking fountain for direct connection to a cold water supply or for use with remote water chillers.

Standard Features

- Waterways Are Lead-Free In Materials & Construction
- Single Mechanical Push-Button On Cabinet Front Keeps Water Flowing While Button Is Depressed
- Built-In Pressure Regulator Assures Smooth, Steady Water Flow
- Chrome-Plated Brass Strainer
- Satin Finish Stainless Steel
- Tailpiece and "P" Trap
- Bottom Cover Plate
- Limited 1-Year Warranty

Installation

- Prior to roughing-in, consult with local, state, and federal codes.
- Shipped with complete instructions and wall mounting bracket.

Colors

- Standard Cabinet Finish: Stainless Steel
- Optional finish at extra cost: Regency Bronze

Limited 1-Year Warranty (Continental limits of the United States and Canada): One year from date of installation on parts only. Detailed warranty certificate enclosed with each drinking fountain; sample copy available upon request.

Components in this drinking fountain are lead free as defined by the Safe Drinking Water Act Amendments of 1986, and the Lead Contamination Control Act of 1988.

DRINKING FOUNTAINS ON-A-WALL



Model FLF110PM Shown



Model covered by these specifications complies with all known Plumbing Codes. Certified by Canadian Standards Association.

Export Warranty: One year on component parts. Detailed warranty certificate enclosed with each drinking fountain, sample copy available upon request.

Specifications are subject to change without notice.

Copyright 1999 OASIS Corporation

Oasis® is a registered trademark of OASIS Corporation.

Model	Style	Physical Dimensions In Inches			Extended From Wall	Net Weight (Approx.)
		Height	Width	Depth		
FLF110PM	Deluxe On-A-Wall	10-7/8	13	13-11/32	13-11/32	13 Lbs.

CLASSWATER INC.

2600 John St., Unit 118
Markham, ON L3R 3W3

(905) 940-5800 Fax (905) 940-4642 888-CLASWTR(252-7987)

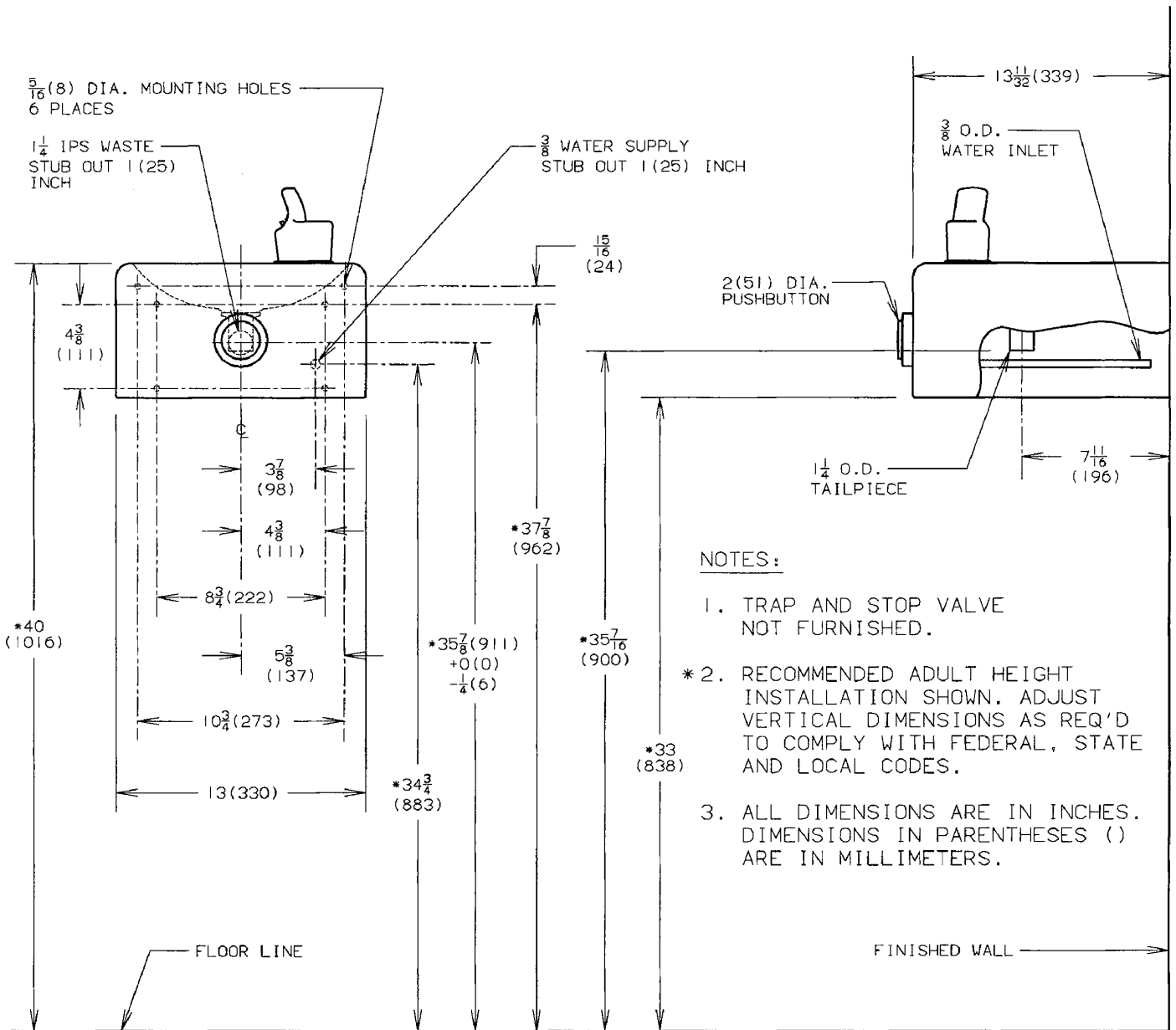
www.classwater.com

CLASSWATER INC.

2600 John St., Unit 118
 Markham, ON L3R 3W3

(905) 940-5800 Fax (905) 940-4642 888-CLASWTR(252-7987)

www.classwater.com



NOTES:

1. TRAP AND STOP VALVE NOT FURNISHED.
- * 2. RECOMMENDED ADULT HEIGHT INSTALLATION SHOWN. ADJUST VERTICAL DIMENSIONS AS REQ'D TO COMPLY WITH FEDERAL, STATE AND LOCAL CODES.
3. ALL DIMENSIONS ARE IN INCHES. DIMENSIONS IN PARENTHESES () ARE IN MILLIMETERS.

Oasis® is a registered trademark of OASIS Corporation
 Specifications are subject to change without notice
 Copyright 1999 OASIS Corporation

THIRD ANGLE PROJECTION	ROUGHING-IN AND DIMENSIONAL DRAWING

Model FLF110PM