

**Model**

FLF140PM is a non-refrigerated stainless steel drinking fountain for direct connection to a cold water supply or for use with remote water chillers.

When this fountain is properly installed, it allows your facility to comply with the ADA requirements.

**Standard Features**

- Waterways Are Lead-Free In Materials & Construction
- Extends 19" From Wall For Easy Access By Wheelchair Users.
- Single Mechanical Push-Button On Cabinet Front Keeps Water Flowing While Button Is Depressed
- Built-In Pressure Regulator Assures Smooth, Steady Water Flow
- Satin Finish Stainless Steel Surfaces
- Chrome-Plated Brass Strainer
- Tailpiece and "P" Trap
- Bottom Cover Plate
- Limited 1-Year Warranty

**Installation**

- Prior to roughing-in, consult with local, state, and federal codes.
- Integral hanger bolts directly to the wall for rigid mounting, easy installation.
- Shipped with complete instructions.



**Colors**

- Standard Cabinet Finish: Stainless Steel
- Optional finish at extra cost: Regency Bronze

**Limited 1-Year Warranty** (Continental limits of the United States and Canada): One year from date of installation on parts only. Detailed warranty certificate enclosed with each drinking fountain; sample copy available upon request.

Components in this drinking fountain are lead free as defined by the Safe Drinking Water Act Amendments of 1986, and the Lead Contamination Control Act of 1988.

**DRINKING  
FOUNTAINS  
WHEELCHAIR**

**Model FLF140PM Shown**



Model covered by these specifications complies with all known Plumbing Codes. Certified by Canadian Standards Association.

**Export Warranty:** One year on component parts. Detailed warranty certificate enclosed with each drinking fountain, sample copy available upon request.

Specifications are subject to change without notice.

Copyright 1999 OASIS Corporation

Oasis® is a registered trademark of OASIS Corporation.

Model	Style	Physical Dimensions In Inches			Extended From Wall	Net Weight (Approx.)
		Height	Width	Depth		
FLF140PM	Wheelchair	10-7/8	13	19	19	13 Lbs.

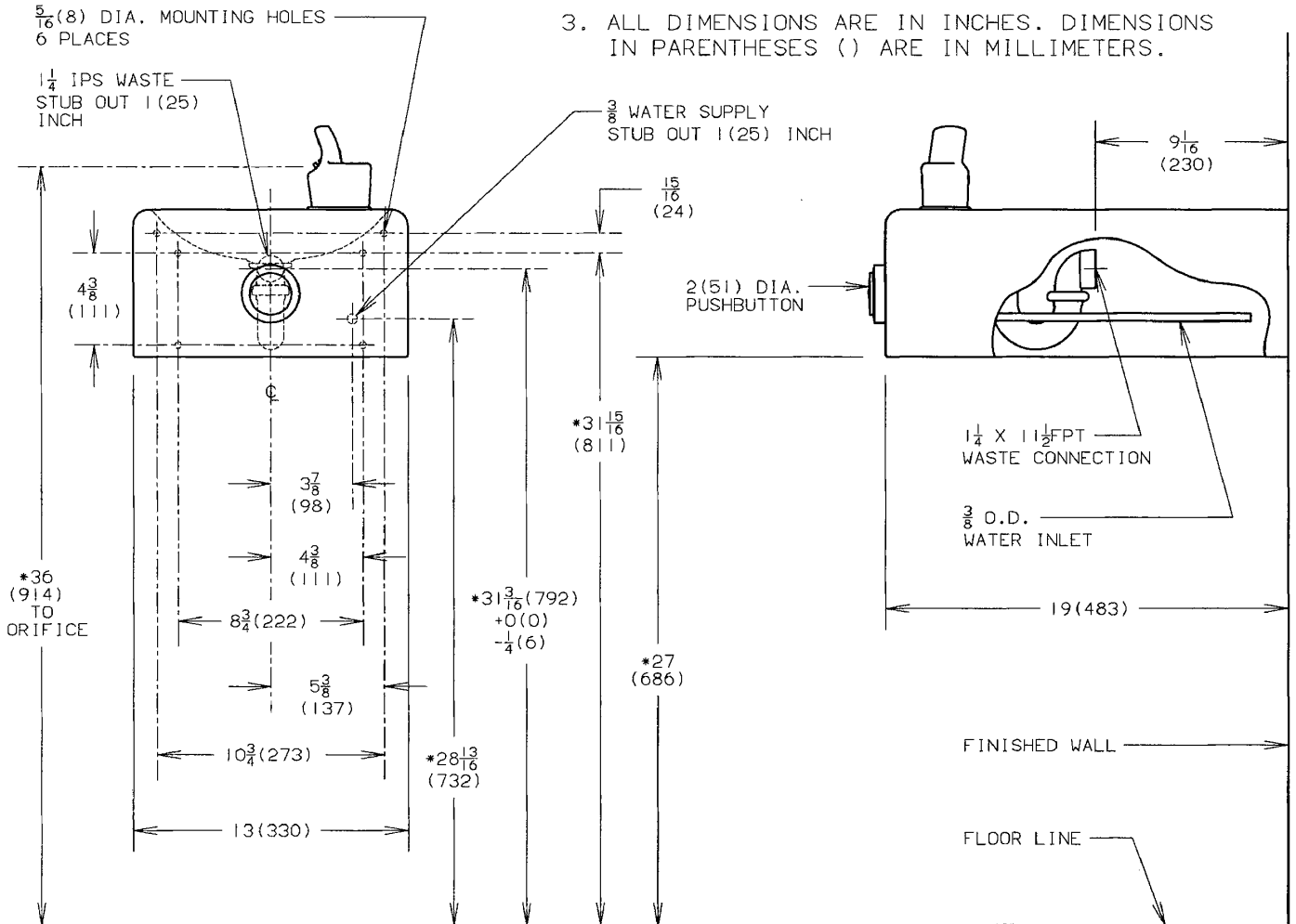
**CLASSWATER INC.**  
 2600 John St., Unit 118  
 Markham, ON L3R 3W3  
 (905) 940-5800 Fax (905) 940-4642 888-CLASWTR( 252-7987)  
[www.classwater.com](http://www.classwater.com)

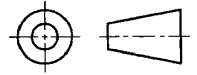
**CLASSWATER INC.**  
 2600 John St., Unit 118  
 Markham, ON L3R 3W3  
 (905) 940-5800 Fax (905) 940-4642 888-CLASWTR( 252-7987)  
[www.classwater.com](http://www.classwater.com)

Oasis® is a registered trademark of OASIS Corporation  
 Specifications are subject to change without notice  
 Copyright 1999 OASIS Corporation

NOTES:

1. STOP VALVE NOT FURNISHED.
- \* 2. RECOMMENDED ADULT HEIGHT INSTALLATION SHOWN. ADJUST VERTICAL DIMENSIONS AS REQUIRED TO COMPLY WITH FEDERAL, STATE AND LOCAL CODES.
3. ALL DIMENSIONS ARE IN INCHES. DIMENSIONS IN PARENTHESES ( ) ARE IN MILLIMETERS.



<p>THIRD ANGLE PROJECTION</p> 	<p>ROUGHING-IN AND DIMENSIONAL DRAWING</p>
--	--