

MODEL

- FLF201PM is a semi-recessed stainless steel cuspidor for direct connection to a water supply.

Standard Features

- Waterways Are Lead-Free In Materials & Construction
- Button On Cabinet Front Supplies Rinse Water To The Cuspidor Spray Heads
- Stainless Steel Surfaces
- Limited 1-Year Warranty

INSTALLATION

- Prior to roughing-in, consult local, state, and federal codes.
- Shipped with complete instructions.


COLOR

- Standard Cabinet Finish: Stainless Steel

Net Weight: Approximately 13 Lbs.

Limited 1-Year Warranty (Continental limits of the United States and Canada): One year from date of installation on parts only. Detailed warranty certificate enclosed with each cuspidor; sample copy available upon request.

Components in this cuspidor are lead free as defined by the Safe Drinking Water Act Amendments of 1986, and the Lead Contamination Control Act of 1988.

 Model covered by these specifications complies with all known Plumbing Codes. Certified by Canadian Standards Association.

Export Warranty: One year on component parts. Detailed warranty certificate enclosed with each cuspidor, sample copy available upon request.

Specifications are subject to change without notice.

DRINKING FOUNTAINS

SEMI-RECESSED CUSPIDOR



Model FLF201PM Shown



Copyright 1999 OASIS Corporation

Oasis® is a registered trademark of OASIS Corporation.

Model	Style	Physical Dimensions In Inches			Extended From Wall	Recessed Into Wall
		Height	Width	Depth		
FLF201PM	Semi-Recessed	27-3/4	17-5/16	13	9-1/2	3-1/2

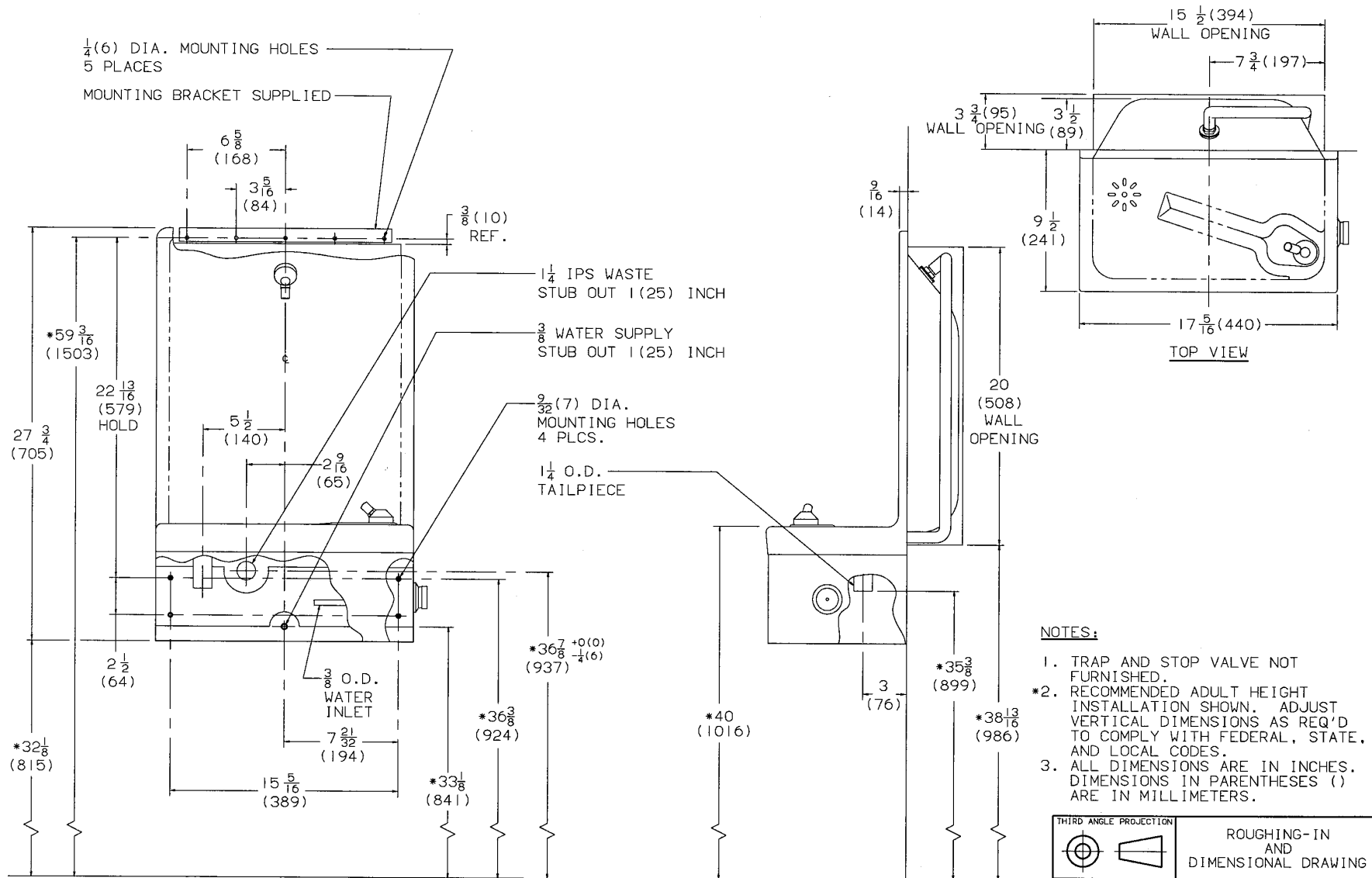
CLASSWATER INC.
 2600 John St., Unit 118
 Markham, ON L3R 3W3
 (905) 940-5800 Fax (905) 940-4642 888-CLASWTR(252-7987)
www.classwater.com

CLASSWATER INC.

2600 John St., Unit 118
Markham, ON L3R 3W3

(905) 940-5800 Fax (905) 940-4642 888-CLASWTR(252-7987)

www.classwater.com



Model FLF201PM