

MODEL

- ❑ FLF202PM is a non-refrigerated, stainless steel drinking fountain and companion cuspidor. When mechanical push-button is activated, supplies both rinse water to the spray heads of the cuspidor, and drinking water to the bubbler.

STANDARD FEATURES

- Waterways Are Lead-Free In Materials & Construction
- Stainless Steel Surfaces
- Single Push-Button On Fountain Unit Front Keeps Water Flowing While Button Is Depressed
- Built-In Pressure Regulator Assures Smooth, Steady Water Flow
- Bottom Cover Plate
- Limited 1-Year Warranty

INSTALLATION

- Prior to roughing-in, consult local, state, and federal codes.
- Shipped with complete instructions and wall mounting bracket.

COLOR

- ❑ Standard Cabinet Finish: Stainless Steel

Net Weight: Approximately 55 Lbs.

Limited 1-Year Warranty (Continental limits of the United States and Canada): One year from date of installation on parts only. Detailed warranty certificate enclosed with each drinking fountain and cuspidor; sample copy available upon request.

Components in this drinking fountain and cuspidor are lead free as defined by the Safe Drinking Water Act Amendments of 1986, and the Lead Contamination Control Act of 1988.



Model covered by these specifications complies with all known Plumbing Codes. Certified by Canadian Standards Association.

DRINKING FOUNTAINS SEMI-RECESSED CUSPIDOR COMBINATION



Model FLF202PM Shown



Export Warranty: One year on component parts. Detailed warranty certificate enclosed with each cuspidor and drinking fountain; sample copy available upon request.

Specifications are subject to change without notice.

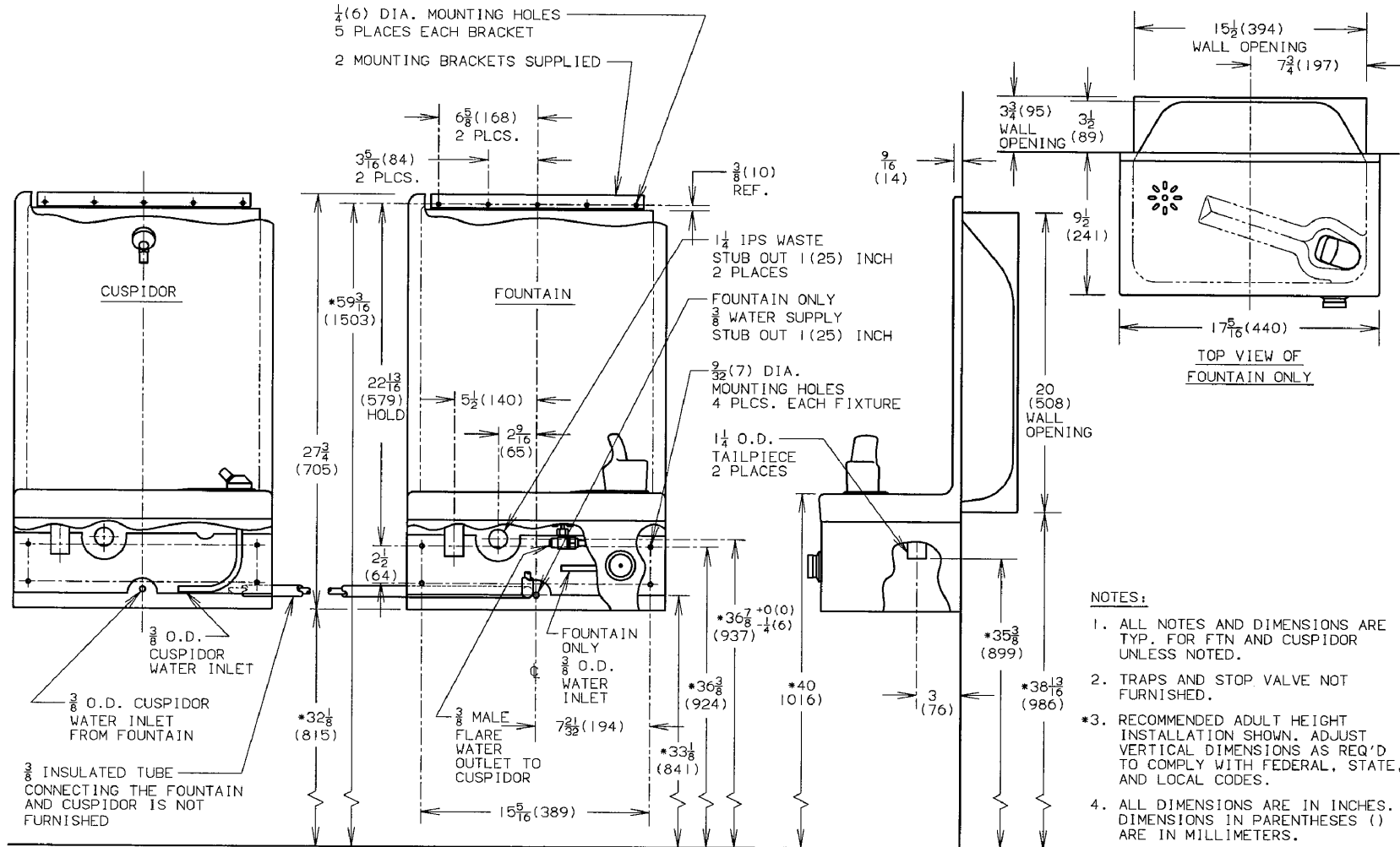
Copyright 1999 OASIS Corporation

Oasis® is a registered trademark of OASIS Corporation.

Model	Style	Physical Dimensions In Inches			Extended From Wall	Recessed Into Wall
		Height	Width	Depth		
FLF202PM	Semi-Recessed (Each Unit)	27-3/4	17-5/16	13	9-1/2	3-1/2

CLASSWATER INC.
2600 John St., Unit 118
Markham, ON L3R 3W3
(905) 940-5800 Fax (905) 940-4642 888-CLASWTR(252-7987)
www.classwater.com

CLASSWATER INC.
 2600 John St., Unit 118
 Markham, ON L3R 3W3
 (905) 940-5800 Fax (905) 940-4642 888-CLASWTR(252-7987)
www.classwater.com



THIRD ANGLE PROJECTION	ROUGHING-IN AND DIMENSIONAL DRAWING