

**MODEL**

- FLF300R is a non-refrigerated, stainless steel self-rimming drinking fountain for direct connection to a cold water supply or for use with remote water chillers.

**STANDARD FEATURES**

- Waterways Are Lead-Free In Materials & Construction
- Satin Finish Stainless Steel Bowl
- Built-In Pressure Regulator Assures Smooth, Steady Water Flow
- Limited 1-Year Warranty

**INSTALLATION**

- Four mounting clamps and wing nuts provided
- Shipped with complete instructions.

**COLOR**

- Standard Cabinet Finish: Stainless Steel
- Optional finish at extra cost: Regency Bronze

**NET WEIGHT:** Approximately 9 Lbs.

**Limited 1-Year Warranty** (Continental limits of the United States and Canada): One year from date of installation on parts only. Detailed warranty certificate enclosed with each drinking fountain; sample copy available upon request.

Components in this drinking fountain are lead free as defined by the Safe Drinking Water Act Amendments of 1986, and the Lead Contamination Control Act of 1988.



Model covered by these specifications complies with all known Plumbing Codes. Certified by Canadian Standards Association.

**Export Warranty:** One year on component parts. Detailed warranty certificate enclosed with each drinking fountain, sample copy available upon request.

# DRINKING FOUNTAINS RADII™ COUNTER-TOP



**Model FLF300R Shown**

Specifications are subject to change without notice.

Copyright 1999 OASIS Corporation

Oasis® is a registered trademark of OASIS Corporation.

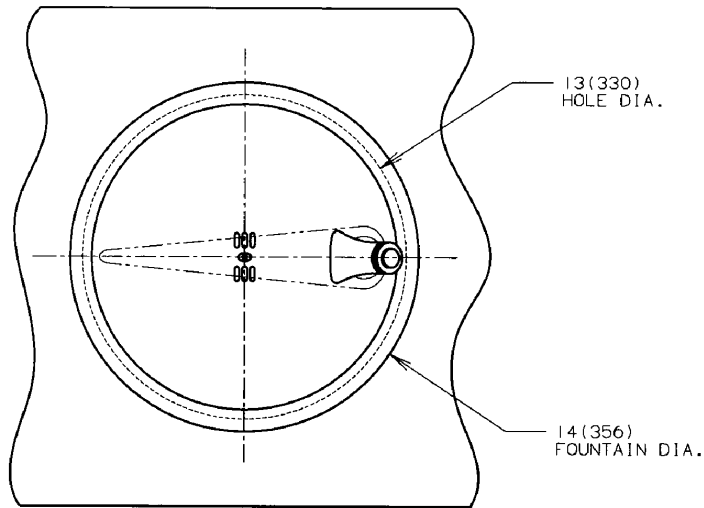
Model	Style	Physical Dimensions In Inches		
		Height	Width	Depth
FLF300R	Counter Top	3-1/2	14	14

## CLASSWATER INC.

2600 John St., Unit 118  
Markham, ON L3R 3W3

(905) 940-5800 Fax (905) 940-4642 888-CLASWTR( 252-7987)

[www.classwater.com](http://www.classwater.com)

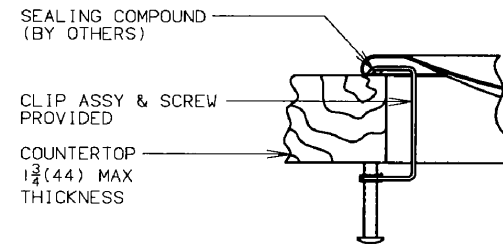
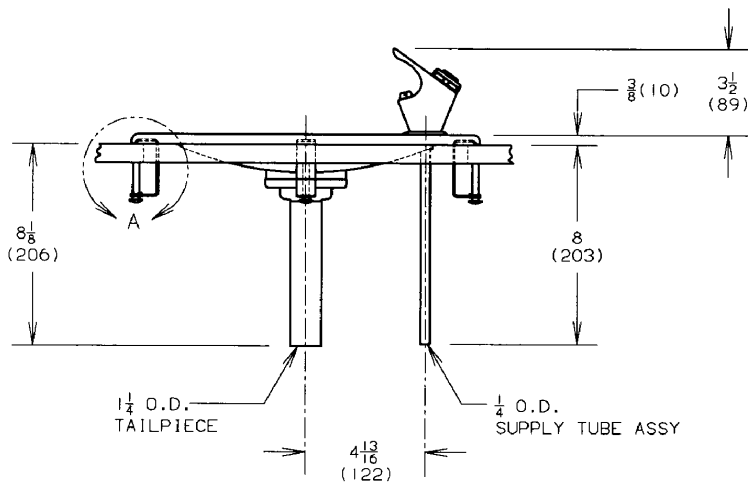


MOUNTING DRINKING FOUNTAIN TO COUNTERTOP

1. CUT A 13(330) DIA. HOLE IN THE COUNTERTOP IN THE DESIRED LOCATION.
2. LAY A BEAD OF SEALING COMPOUND  $\frac{1}{8}$ (3) WIDE BY  $\frac{1}{8}$ (3) THICK AROUND THE BOTTOM LIP OF THE FOUNTAIN.
3. POSITION THE FOUNTAIN IN THE COUNTERTOP HOLE.
4. SCREW IN SEVERAL THREADS OF THE (4) FOUR SCREWS PROVIDED INTO THE CLIP ASSEMBLIES. ENGAGE THE CLIP ASSEMBLIES IN THE RETURN FLANGE OF THE FOUNTAIN (DETAIL 'A') AND TIGHTEN THE SCREWS TO SECURE THE FOUNTAIN TO THE TOP. NOTE, EQUALLY SPACE THE (4) FOUR CLIP ASSEMBLIES AROUND THE FOUNTAIN.
5. WIPE AWAY ANY EXCESS SEALING COMPOUND AROUND THE FOUNTAIN.
6. CONNECT PLUMBING. CHECK FOR LEAKS.

NOTES:

1. ALL DIMENSIONS ARE IN INCHES. DIMENSIONS IN PARENTHESES ( ) ARE IN MILLIMETERS.
2. TRAP AND STOP VALVE NOT FURNISHED.



DETAIL-A

