

#### MODEL

- FLF500 is a non-refrigerated, stainless steel drinking fountain ideal for installation in parks and recreation areas.

#### STANDARD FEATURES

- Waterways Are Lead-Free In Materials & Construction
- Dial-A-Drink® Bubbler
- Cabinet Base Completely Conceals Plumbing Lines
- Satin Finish Stainless Steel Surfaces
- Limited 1-Year Warranty

#### INSTALLATION

- Shipped with complete instructions.

#### COLOR

- Standard Finish: Stainless Steel

**NET WEIGHT: ??**

**Limited 1-Year Warranty** (Continental limits of the United States and Canada): One year from date of installation on parts only. Detailed warranty certificate enclosed with each drinking fountain; sample copy available upon request.

Components in this drinking fountain are lead free as defined by the Safe Drinking Water Act Amendments of 1986, and the Lead Contamination Control Act of 1988.



Model covered by these specifications complies with all known Plumbing Codes. Certified by Canadian Standards Association.


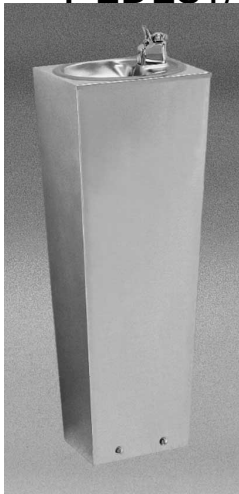
**Export Warranty:** One year on component parts. Detailed warranty certificate enclosed with each drinking fountain, sample copy available upon request.

Specifications are subject to change without notice.

Copyright 1999 OASIS Corporation

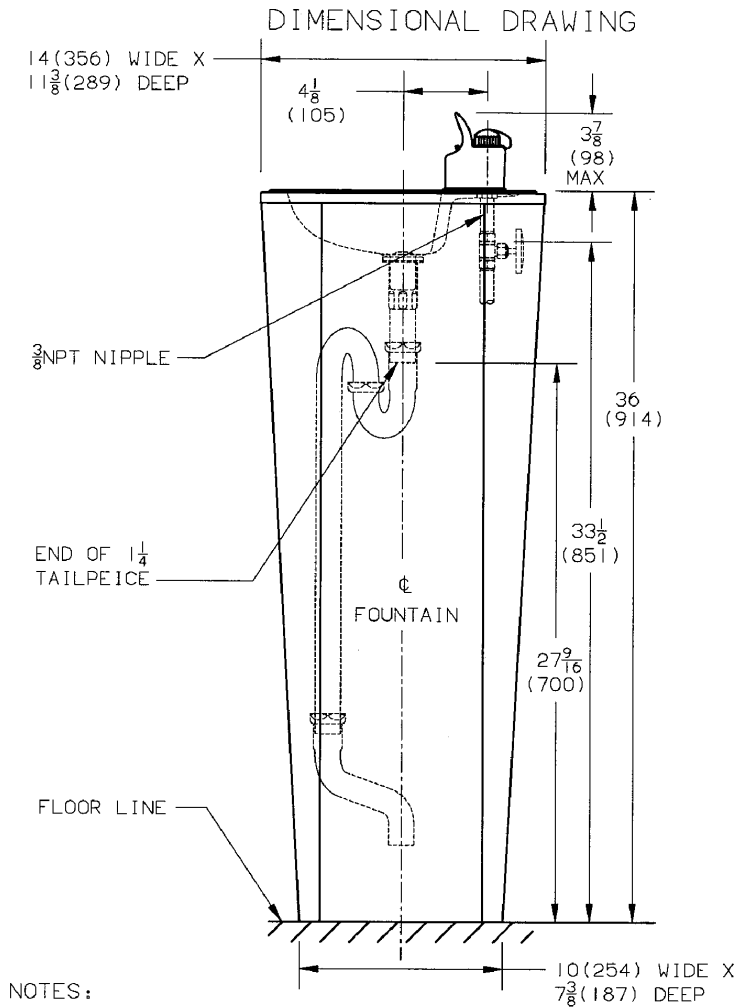
Oasis® and Dial-A-Drink® are registered trademarks of OASIS Corporation.

## DRINKING FOUNTAINS PEDESTAL DRINKING FOUNTAIN

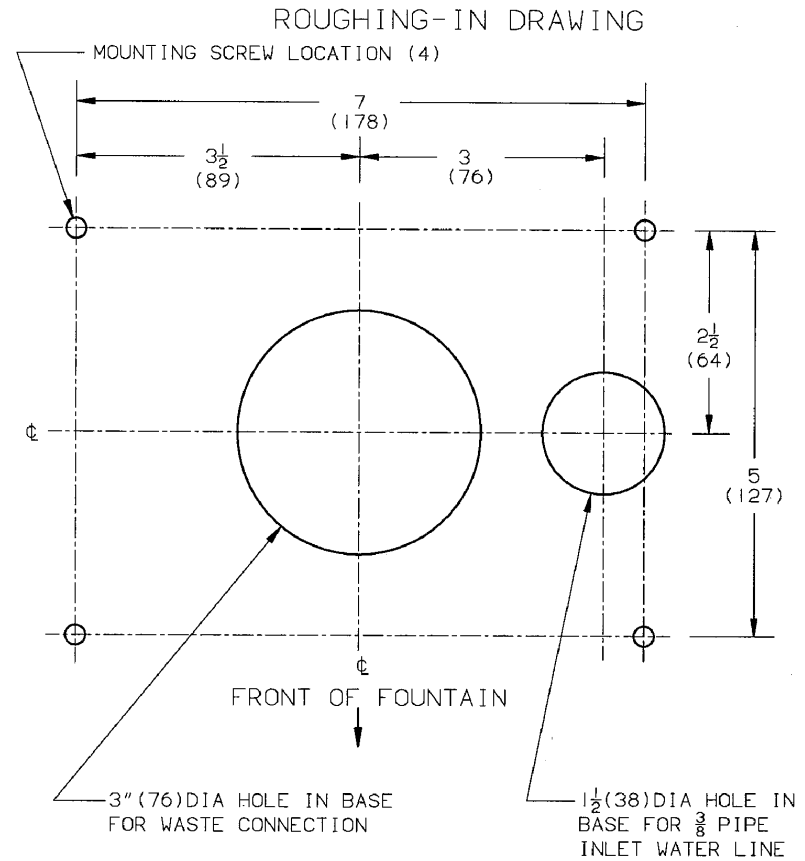


**Model FLF500 Shown**

**CLASSWATER INC.**  
2600 John St., Unit 118  
Markham, ON L3R 3W3  
(905) 940-5800 Fax (905) 940-4642 888-CLASWTR( 252-7987)  
[www.classwater.com](http://www.classwater.com)



NOTES:  
 TRAP, OFFSET, FIXTURE STOP VALVE, AND UNION NOT FURNISHED WITH DRINKING FOUNTAIN.  
 ALL DIMENSIONS ARE IN INCHES.  
 DIMENSIONS IN PARENTHESES ( ) ARE IN MILLIMETERS.



NOTES:  
 MOUNTING HOLES IN BASE ARE OVERSIZED TO PROVIDE AMPLE CLEARANCE FOR 1/4" (6) DIA FASTENERS. FLATWASHERS SHOULD BE USED TO PROVIDE MAXIMUM STRENGTH.

