

Models

- MLF8WREE produces a light beam that is reflected off the user to automatically start water flowing. If user does not move away within 30 seconds, water shuts off automatically.
- MLF8WR operates with light pressure applied to any of the two push pads.

Standard Features

- Waterways Are Lead-Free In Materials & Construction
- Stainless Steel Surfaces
- Flexible Bubbler Guard
- Heavy-Gauge Galvanized Steel Wall Mounting Frame
- High-Efficiency Cooling Tank and Coil
- Refrigerant R-134a
- Limited 5-Year Warranty

Installation


- Prior to roughing-in, consult with local, state, and federal codes for proper mounting height.
- Refrigerated unit requires 11-5/16" wall recess.
- Shipped with complete instructions and wall mounting frame.

Colors

- Standard Finish: Stainless Steel
- Optional finishes at extra cost: Regency Bronze


Limited 5-Year Warranty (Continental limits of the United States and Canada): Five years on the sealed refrigeration system and most component parts. Detailed warranty certificate enclosed with each water cooler; sample copy available upon request.

Components in these water coolers/fountains are lead free as defined by the Safe Drinking Water Act Amendments of 1986, and the Lead Contamination Control Act of 1988.



WATER COOLERS

RADII™
MODULAR



The distinctive, modern design of this cooler and fountain complement just about any interior design as well as serve the able-bodied and disabled.

Model MLF8WR Shown



Models covered by these specifications comply with all known Plumbing Codes. Listed by Underwriter's Laboratories. Certified by Canadian Standards Association, and Certified to Air Conditioning and Refrigeration Institute Standard 1010.

Export Warranty: One year on the sealed refrigeration system and most component parts. Four-year replacement contract on sealed refrigeration system. Detailed warranty certificate enclosed with each water cooler, sample copy available upon request.

Specifications are subject to change without notice.
 Copyright 1999 OASIS Corporation
 Oasis® is a registered trademark of OASIS Corporation.

*Air Conditioning and Refrigeration Institute Standard Rating Condition 80°F inlet water temperature.

Model	50°F Drinking Water 90°F Ambient Air Temperature*		Pre-Cooler	Hot 'N Cold Model	115 Volts, 60 Hz			Glass Filler Accessory Option	Cabinet Color Option	Net Weight (Approx.)
	Rated Capacity GPH	Base Rate GPH			Compr. HP	Full Load Amps	Rated Watts			
MLF8WREE	8.0	8.0	No	No	1/5	4.5	380	No	Yes	101 Lbs.
MLF8WR	8.0	8.0	No	No	1/5	4.3	380	No	Yes	101 Lbs.

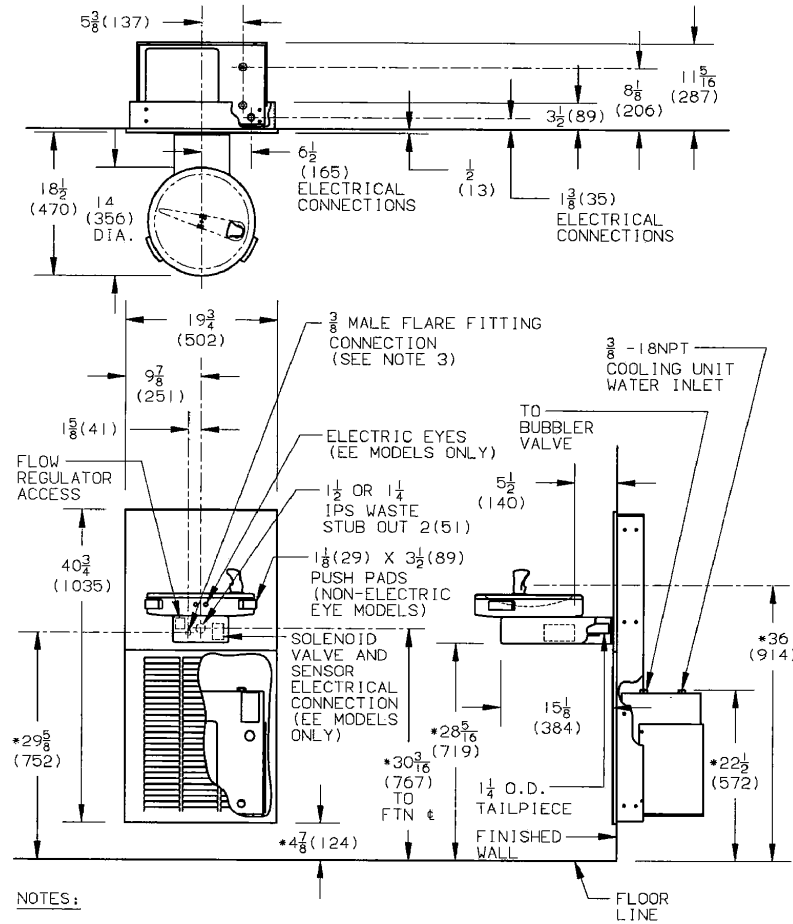
CLASSWATER INC.
 2600 John St., Unit 118
 Markham, ON L3R 3W3
 (905) 940-5800 Fax (905) 940-4642 888-CLASWTR (252-7987)
www.classwater.com

Oasis® is a registered trademark of OASIS Corporation
 Specifications are subject to change without notice
 Copyright 1999 OASIS Corporation

CLASSWATER INC.
 2600 John St., Unit 118
 Markham, ON L3R 3W3
 (905) 940-5800 Fax (905) 940-4642 888-CLASWTR(252-7987)
www.classwater.com

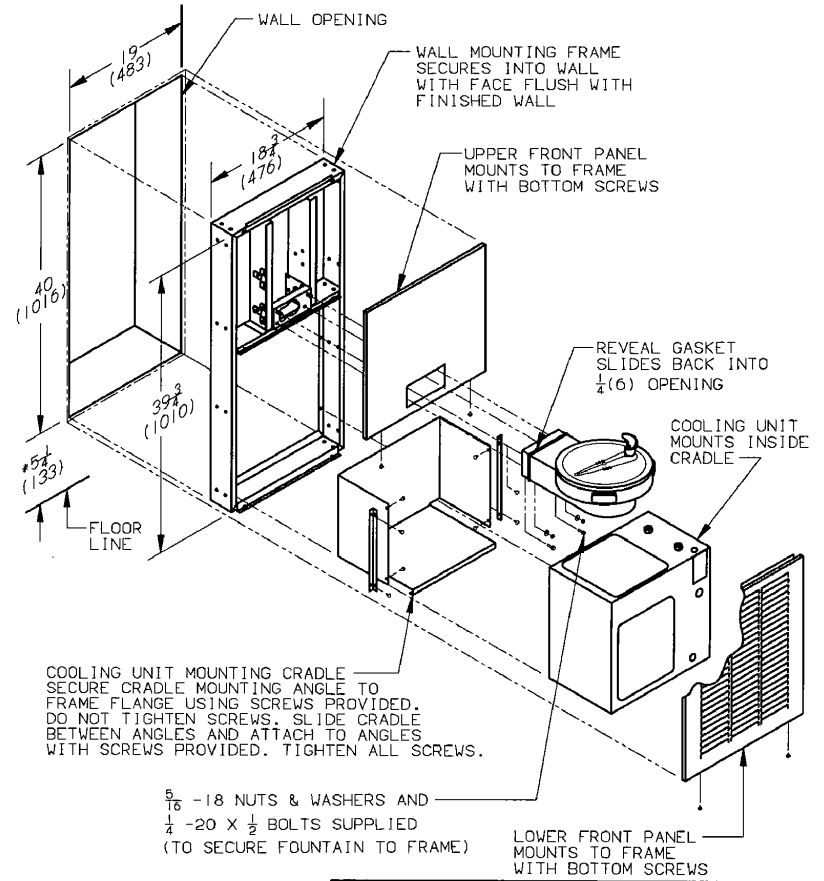
ROUGHING-IN AND DIMENSIONAL DRAWING

WALL OPENING & ASSEMBLY



NOTES:

- *1. RECOMMENDED ADULT HEIGHT INSTALLATION SHOWN. ADJUST VERTICAL DIMENSIONS AS REQUIRED TO COMPLY WITH FEDERAL, STATE AND LOCAL CODES.
2. STOP VALVE, TRAP, PIPE CONNECTOR TO WASTE LINE NOT PROVIDED.
3. FLARE NUT SUPPLIED TO FOUNTAIN WITH COOLING UNIT ONLY.
4. ALL DIMENSIONS ARE IN INCHES. DIMENSIONS IN PARENTHESES () ARE IN MILLIMETERS.



THIRD ANGLE PROJECTION

ROUGHING-IN AND DIMENSIONAL DRAWING

Models MLF8WR & MLF8WREE