

Model

- MSSLPM is a non-refrigerated drinking fountain. When the mechanical push-button is depressed, water continues to flow as long as the button is depressed.

When accessory apron is used on the upper unit, this cooler will comply with ADA guidelines when properly installed. Apron not required when installed in an alcove or if a wing wall is installed on the right side.

Standard Features

- Waterways Are Lead-Free In Materials & Construction
- Stainless Steel Surfaces
- Flexible Bubbler Guard
- Heavy-Gauge Galvanized Steel Wall Mounting Frame
- Limited 1-Year Warranty

Installation

- Prior to roughing-in, consult with local, state, and federal codes for proper mounting height.
- Shipped with complete instructions and wall mounting frame.

Colors

- Standard Finish: Stainless Steel
- Optional finish at extra cost: Regency Bronze

Accessories

- Stainless Steel Apron for upper unit (032067-001)
- Regency Bronze Apron for upper unit (032067-002)

Net Weight: Approximately 59 Lbs.

Limited 1-Year Warranty (Continental limits of the United States and Canada): One year from date of installation on parts only. Detailed warranty certificate enclosed with each drinking fountain; sample copy available upon request.

Components in this fountain are lead free as defined by the Safe Drinking Water Act Amendments of 1986, and the Lead Contamination Control Act of 1988.



Model covered by this specification complies with all known Plumbing Codes. Certified by Canadian Standards Association.



OASIS

DRINKING FOUNTAIN

 **BARRIER-FREE**
BI-LEVEL MODULAR



These distinctive, space-saving fountains serve the disabled as well as the able-bodied.

Model MSSLPM Shown

Export Warranty: One-year on component parts. Detailed warrant certificate enclosed with each drinking fountain; sample copy available upon request. Specifications are subject to change without notice.

Copyright 1999 OASIS Corporation

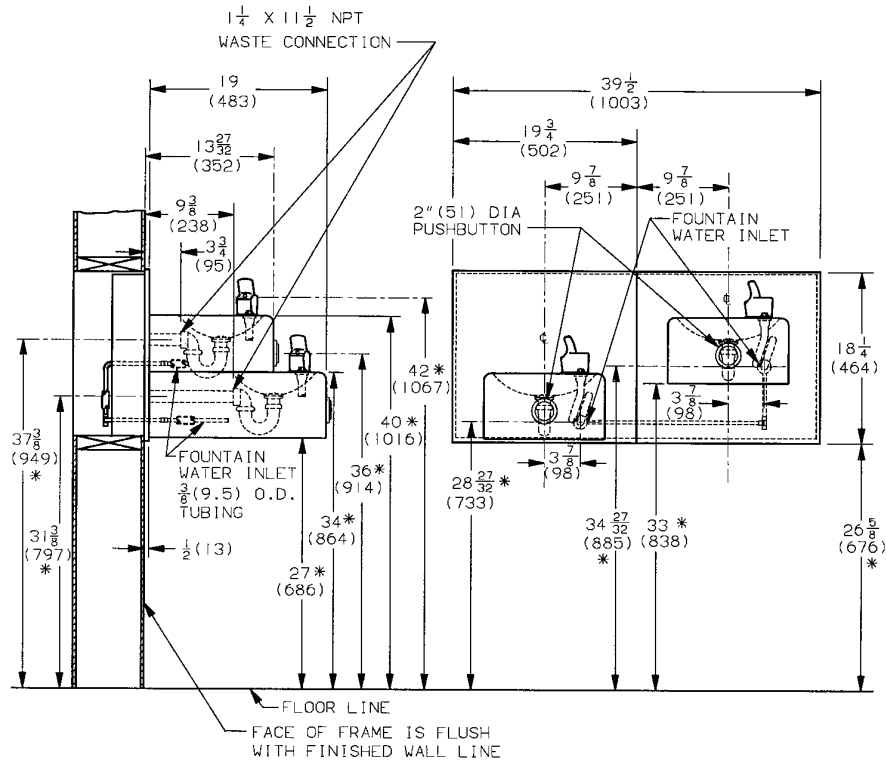
Oasis® is a registered trademark of OASIS Corporation

CLASSWATER INC.
2600 John St., Unit 118
Markham, ON L3R 3W3
(905) 940-5800 Fax (905) 940-4642 888-CLASWTR(252-7987)
www.classwater.com

Oasis® is a registered trademark of OASIS Corporation
 Specifications are subject to change without notice
 Copyright 1999 OASIS Corporation

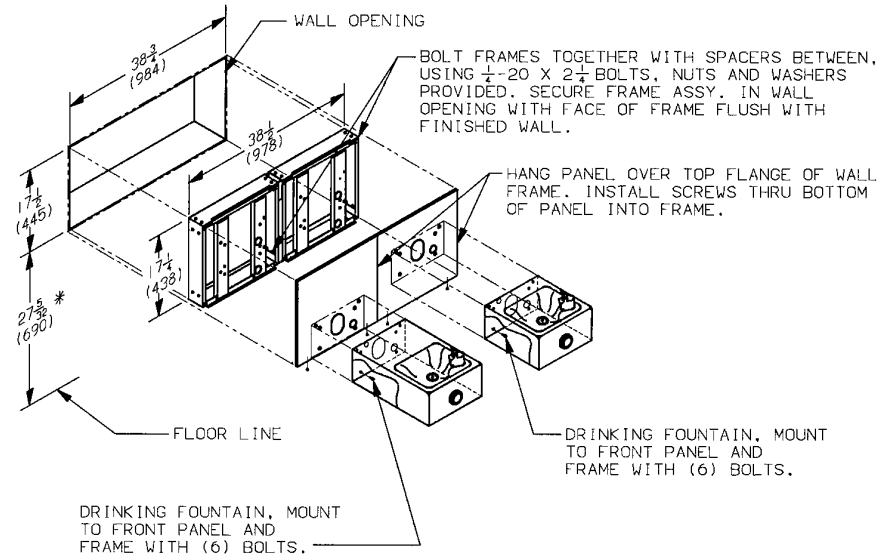
CLASSWATER INC.
 2600 John St., Unit 118
 Markham, ON L3R 3W3
 (905) 940-5800 Fax (905) 940-4642 888-CLASWTR(252-7987)
www.classwater.com

ROUGHING-IN & DIMENSIONAL DRAWING



- NOTES:
1. ALL DIMENSIONS ARE IN INCHES.
 2. DIMENSIONS IN PARENTHESIS () ARE IN MILLIMETERS.
 3. STOP VALVE NOT PROVIDED WITH UNIT.
 - * 4. RECOMMENDED ADULT HEIGHT INSTALLATION SHOWN. ADJUST VERTICAL DIMENSIONS AS REQUIRED TO COMPLY WITH FEDERAL, STATE, AND LOCAL CODES.

WALL OPENING & ASSEMBLY



THIRD ANGLE PROJECTION	ROUGHING-IN AND DIMENSIONAL DRAWING

Model MSSLPM