

Model

- PLF20FS delivers 20 gph of chilled drinking water.
- PLF20FSCP is corrosion resistant and features a stainless steel cabinet, frame, base parts, and fasteners. A special protective coating is also applied to the compressor, condenser, cooling tank, pre-cooler, water drain, and interconnecting water and refrigerant lines.

Standard Features

- Waterways Are Lead-Free In Materials & Construction
- Stainless Steel Top
- Dial-A-Drink® Bubbler
- Flexible Bubbler Guard
- Heavy-Gauge Galvanized Structural Steel Frame
- Stainless Steel Wrap-Around Base Resists Corrosion
- High-Efficiency Cooling Tank and Coil
- Refrigerant R-134a
- Limited 5-Year Warranty

Installation

- Prior to roughing-in, consult with local, state, and federal codes.
- Shipped with complete instructions.

Colors

- Standard Cabinet Finishes: Model PLF20FS -- Mocha Tan Acrylic Enamel; Model PLF20FSCP -- Stainless Steel
- Optional finishes for Model PLF20FS at extra cost: Stainless Steel and Baked Enamel finishes.
 - Specify Finish _____

Accessories


Glass Fillers

- Push Handle 029603-004
- Push Back 029603-005
- Push Down 029603-006
- Glass Filler Kit is required for Field Installation of the above glass fillers.


Foot Pedal

- Factory Installed On Special Request
- Kit Available for Field Installation

Limited 5-Year Warranty (Continental limits of the United States and Canada): Five years on the sealed refrigeration system and most



WATER COOLERS FREE-STANDING LARGE CAPACITY



These models are ideal in areas where demand is unusually heavy: lobbies, auditoriums, schools, and theaters.

Model PLF20FS Shown

component parts. Detailed warranty certificate enclosed with each water cooler; sample copy available upon request.

Components in these water coolers/fountains are lead free as defined by the Safe Drinking Water Act Amendments of 1986, and the Lead Contamination Control Act of 1988.



Models covered by these specifications comply with all known Plumbing Codes. Listed by Underwriter's Laboratories. Certified by Canadian Standards Association, and Certified to Air Conditioning and Refrigeration Institute Standard 1010.



Indicates conformity to European Union Directives.

Export Warranty: One year on the sealed refrigeration system and most component parts. Four-year replacement contract on sealed refrigeration system. Detailed warranty certificate enclosed with each water cooler, sample copy available upon request.

Specifications are subject to change without notice.

Copyright 1999 OASIS Corporation

Oasis® and Dial-A-Drink® are registered trademarks of OASIS Corporation.

*Air Conditioning and Refrigeration Institute Standard Rating Condition 80°F inlet water temperature.

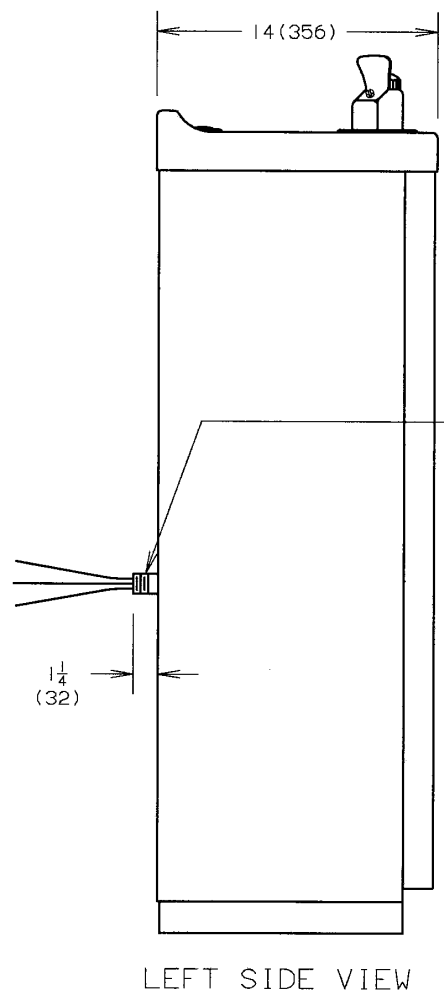
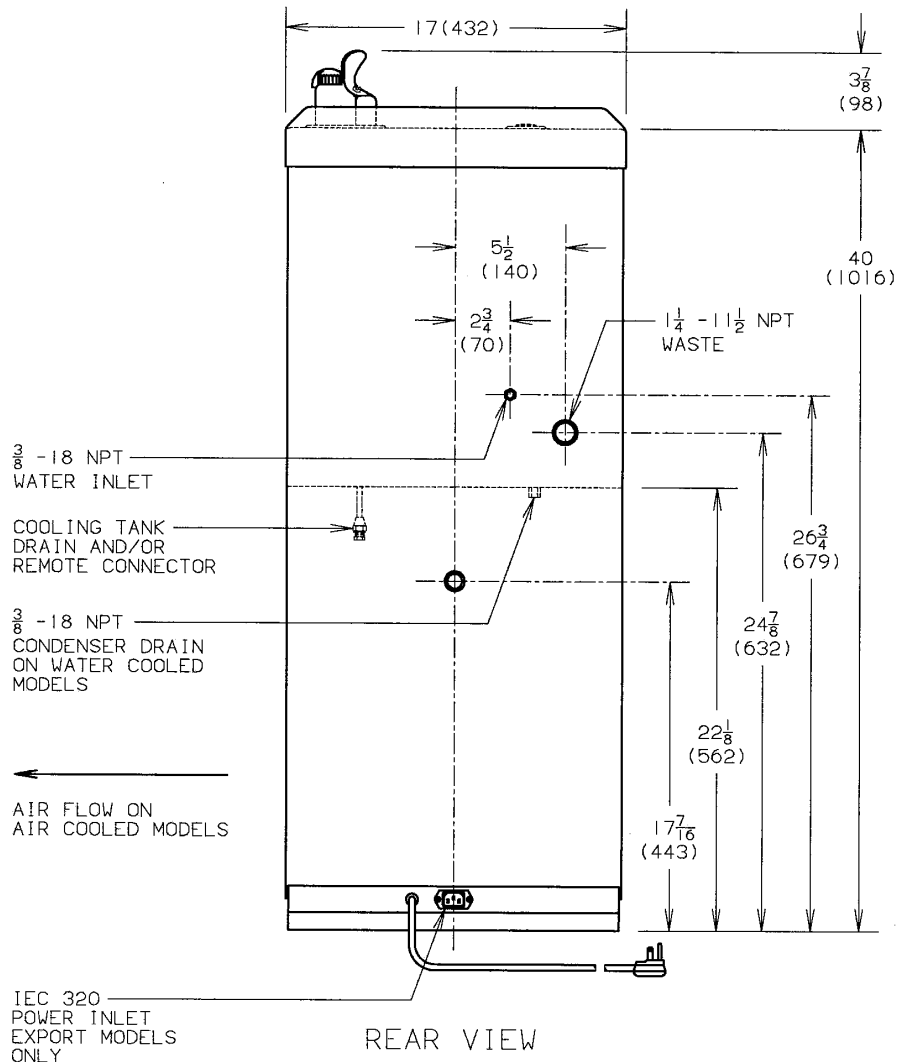
** Special export models available, operable on 220-240 volts, 50/60 Hz. UL, CSA and ARI certification not applicable.

Model	50°F Drinking Water 90°F Ambient Air Temperature*		Pre-Cooler	Hot 'N Cold Model	115 Volts, 60 Hz			Glass Filler Accessory Option	Cabinet Color Option	Net Weight (Approx.)
	Rated Capacity GPH	Base Rate GPH			Compr. HP	Full Load Amps	Rated Watts			
PLF20FS**	20.0	11.0	Yes	No	1/3	7.3	600	Yes	Yes	91 Lbs.
PLF20FSCP	20.0	11.0	Yes	No	1/3	7.3	600	Yes	No	91 Lbs.

CLASSWATER INC.
 2600 John St., Unit 118
 Markham, ON L3R 3W3
 (905) 940-5800 Fax (905) 940-4642 888-CLASWTR(252-7987)
www.classwater.com

Oasis® is a registered trademark of OASIS Corporation
 Specifications are subject to change without notice
 Copyright 1999 OASIS Corporation

CLASSWATER INC.
 2600 John St., Unit 118
 Markham, ON L3R 3W3
 (905) 940-5800 Fax (905) 940-4642 888-CLASWTR(252-7987)
www.classwater.com



FOR HAZARDOUS DUTY MODELS: 1/2" (13) RIGID CONDUIT SEALED WITH 18 GA. LEADS APPROX. 12" (305) LG.

ALL DIMENSIONS ARE IN INCHES.

DIMENSIONS IN PARENTHESES () ARE IN MILLIMETERS.

ALLOW 4" (102) BETWEEN REAR AND/OR SIDES FOR VENTILATION IF SET IN AN ALCOVE OR NEAR A CORNER.

THIRD ANGLE PROJECTION	ROUGHING-IN AND DIMENSIONAL DRAWING
------------------------	-------------------------------------

Models P16FSWHD, P16FSWHD, PLF16FSW, PLF16FSWCP, PLF20FS, and PLF20FSCP