

Models

- PLF8SKPE has a push button on the front of the cabinet. Water flows as long as the button is depressed.
- PLF8SKTP features push buttons on the front and both sides of the cabinet.

Both of these models satisfy CABO/ANSI A117.1-1992. When these coolers are properly installed, they allow your facility to comply with the ADA requirements.

Standard Features

- Waterways Are Lead-Free In Materials & Construction
- Stainless Steel Top
- Flexible Bubbler Guard
- Welded, Heavy-Gauge Galvanized Steel Frame
- High-Efficiency Cooling Tank and Coil
- Low Inlet "P" Trap
- Refrigerant R-134a
- Limited 5-Year Warranty

Installation

- Prior to roughing-in, consult with local, state, and federal codes for proper mounting height.
- Shipped with complete instructions and wall mounting bracket.
- Optional steel bracket available for stud/masonry walls.
- Removable panels provide easy access for installation.

Colors

- Standard Cabinet Finish: Sandstone Vinyl-On-Steel
- Optional finishes at no extra cost: Greystone Vinyl-on-Steel and Mocha Tan Baked Enamel
- Optional finishes at extra cost: Stainless Steel, Regency Bronze, and optional Baked Enamel finishes.
- Specify Finish _____

Accessory

- Trim bezel (031364-001) to conceal wall surface discoloration

Limited 5-Year Warranty (Continental limits of the United States and Canada): Five years on the sealed refrigeration system and most component parts. Detailed warranty certificate enclosed with each water cooler; sample copy available upon request.



WATER COOLERS



BARRIER-FREE

Designed for easy operation, access and convenience by both the able-bodied and the disabled. These models feature "push button" activated water systems.



Model PLF8SKPE Shown

Components in these water coolers/fountains are lead free as defined by the Safe Drinking Water Act Amendments of 1986, and the Lead Contamination Control Act of 1988.



Models covered by these specifications comply with all known Plumbing Codes. Listed by Underwriter's Laboratories. Certified by Canadian Standards Association, and Certified to Air Conditioning and Refrigeration Institute Standard 1010.



Indicates conformity to European Union Directives.

Export Warranty: One year on the sealed refrigeration system and most component parts. Four-year replacement contract on sealed refrigeration system. Detailed warranty certificate enclosed with each water cooler, sample copy available upon request.

Specifications are subject to change without notice.

Copyright 1999 OASIS Corporation

Oasis® is a registered trademark of OASIS Corporation.

*Air Conditioning and Refrigeration Institute Standard Rating Condition 80°F inlet water temperature.

** Special export models available, operable on 220-240 volts, 50/60 Hz. UL, CSA and ARI certification not applicable.

| Model | 50°F Drinking Water 90°F Ambient Air Temperature* | | Pre-Cooler | Hot 'N Cold Model | 115 Volts, 60 Hz | | | Glass Filler Accessory Option | Cabinet Color Option | Net Weight (Approx.) |
|----------|---|---------------|------------|-------------------|------------------|----------------|-------------|-------------------------------|----------------------|----------------------|
| | Rated Capacity GPH | Base Rate GPH | | | Compr. HP | Full Load Amps | Rated Watts | | | |
| PLF8SKPE | 8.0 | 8.0 | No | No | 1/5 | 4.3 | 380 | No | Yes | 67 Lbs. |
| PLF8SKTP | 8.0 | 8.0 | No | No | 1/5 | 4.3 | 380 | No | Yes | 67 Lbs. |

CLASSWATER INC.

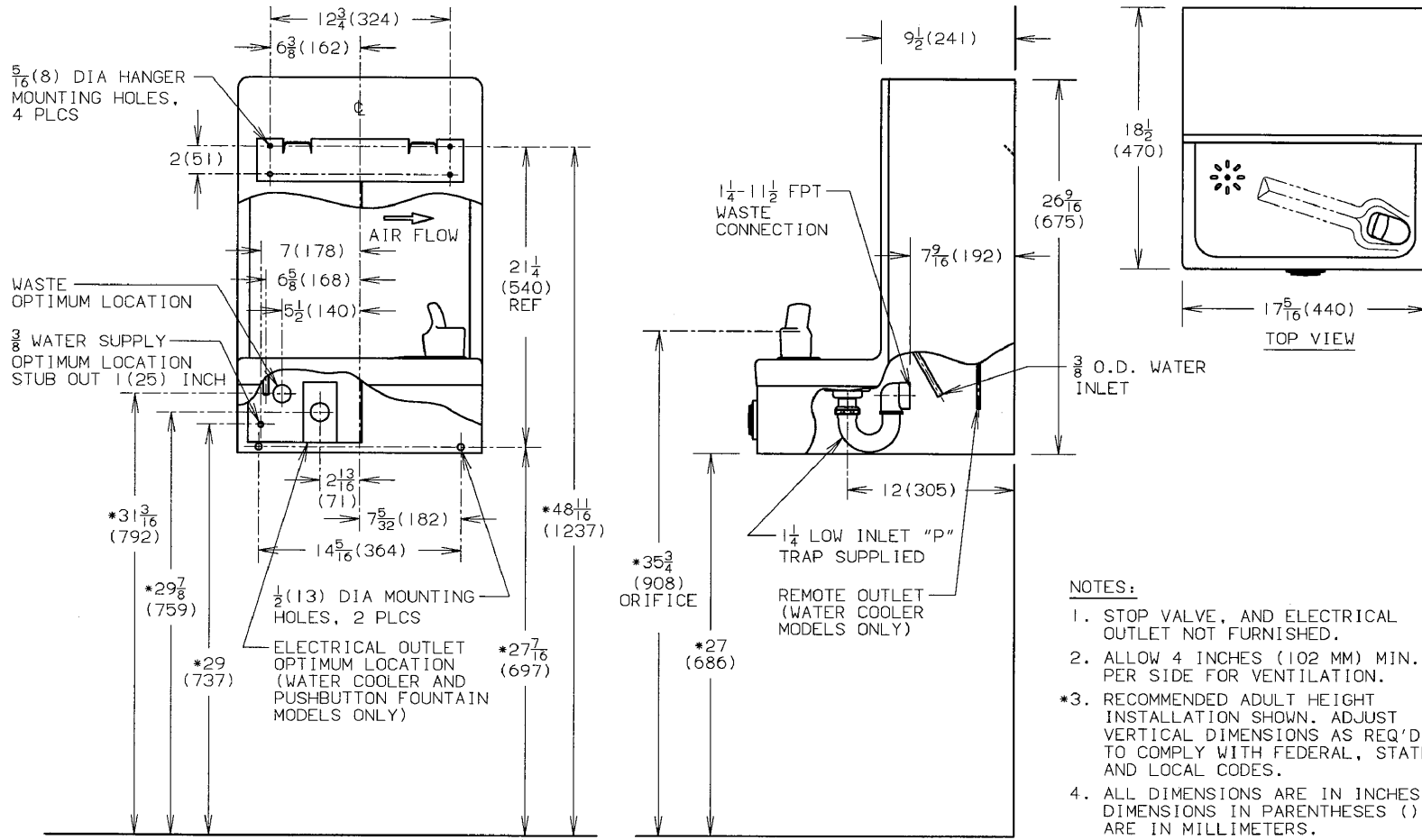
2600 John St., Unit 118
Markham, ON L3R 3W3

(905) 940-5800 Fax (905) 940-4642 888-CLASWTR(252-7987)

www.classwater.com

Oasis® is a registered trademark of OASIS Corporation
 Specifications are subject to change without notice
 Copyright 1999 OASIS Corporation

CLASSWATER INC.
 2600 John St., Unit 118
 Markham, ON L3R 3W3
 (905) 940-5800 Fax (905) 940-4642 888-CLASWTR(252-7987)
www.classwater.com



- NOTES:**
1. STOP VALVE, AND ELECTRICAL OUTLET NOT FURNISHED.
 2. ALLOW 4 INCHES (102 MM) MIN. PER SIDE FOR VENTILATION.
 - *3. RECOMMENDED ADULT HEIGHT INSTALLATION SHOWN. ADJUST VERTICAL DIMENSIONS AS REQ'D TO COMPLY WITH FEDERAL, STATE, AND LOCAL CODES.
 4. ALL DIMENSIONS ARE IN INCHES. DIMENSIONS IN PARENTHESES () ARE IN MILLIMETERS.

| | |
|------------------------|-------------------------------------|
| THIRD ANGLE PROJECTION | |
| | ROUGHING-IN AND DIMENSIONAL DRAWING |

Models PLF8SKPE & PLF8SKTP