

**Models**

- PLF8WFEE produces a light beam that is reflected off the user to automatically start water flowing. Not even a touch is needed. If user does not move away within 30 seconds, water shuts off automatically.
- PLF8WFPM delivers 8 gph of chilled drinking water. When the push-button is depressed, water continues to flow as long as the button is depressed.

These models satisfy CABO/AANSI A117.1-1992, and when properly installed, they allow your facility to comply with the ADA requirements.

**Standard Features**

- Waterways Are Lead-Free In Materials & Construction
- Stainless Steel Surfaces
- Flexible Bubbler Guard
- Heavy-Gauge Galvanized Steel Wall Mounting Sleeve
- High-Efficiency Cooling Tank and Coil
- Refrigerant R-134a
- Limited 5-Year Warranty

**Installation**

- Prior to roughing-in, consult with local, state, and federal codes for proper mounting height.
- Shipped with complete instructions and wall mounting sleeve.

**Colors**

- Standard Finish: Stainless Steel
- Optional finish at extra cost: Regency Bronze

**Accessories**

- Glass/Carafe Filler (Factory Installed 030239-004)

**Limited 5-Year Warranty** (Continental limits of the United States and Canada): Five years on the sealed refrigeration system and most component parts. Detailed warranty certificate enclosed with each water cooler; sample copy available upon request.

Components in these water coolers/fountains are lead free as defined by the Safe Drinking Water Act Amendments of 1986, and the Lead Contamination Control Act of 1988.



## WATER COOLERS

## BARRIER-FREE

## INVERTED

## FULLY-RECESSED



Wall installation is particularly appropriate for schools, hospitals, public lobbies, and office corridors.

**Model PLF8WFPM Shown**



Models covered by these specifications comply with all known Plumbing Codes. Listed by Underwriter's Laboratories. Certified by Canadian Standards Association, and Certified to Air Conditioning and Refrigeration Institute Standard 1010.



Indicates conformity to European Union Directives.

**Export Warranty:** One year on the sealed refrigeration system and most component parts. Four-year replacement contract on sealed refrigeration system. Detailed warranty certificate enclosed with each water cooler, sample copy available upon request.

Specifications are subject to change without notice.

Copyright 1999 OASIS Corporation

Oasis® is a registered trademark of OASIS Corporation.

\*Air Conditioning and Refrigeration Institute Standard Rating Condition 80°F inlet water temperature.

\*\*Special export models available, operable on 220-240 volts, 50/60 Hz. UL, CSA and ARI certification not applicable.

Model	50°F Drinking Water		Pre-Cooler	Hot 'N Cold Model	115 Volts, 60 Hz			Glass Filler Accessory Option	Cabinet Color Option	Net Weight (Approx.)
	90°F Ambient Air Temperature*				Compr. HP	Full Load Amps	Rated Watts			
	Rated Capacity GPH	Base Rate GPH								
PLF8WFEE	8.0	8.0	No	No	1/5	4.6	380	Yes	Yes	92 Lbs.
PLF8WFPM**	8.0	8.0	No	No	1/5	4.3	380	Yes	Yes	96 Lbs.

**CLASSWATER INC.**  
 2600 John St., Unit 118  
 Markham, ON L3R 3W3  
 (905) 940-5800 Fax (905) 940-4642 888-CLASWTR( 252-7987)  
[www.classwater.com](http://www.classwater.com)

# CLASSWATER INC.

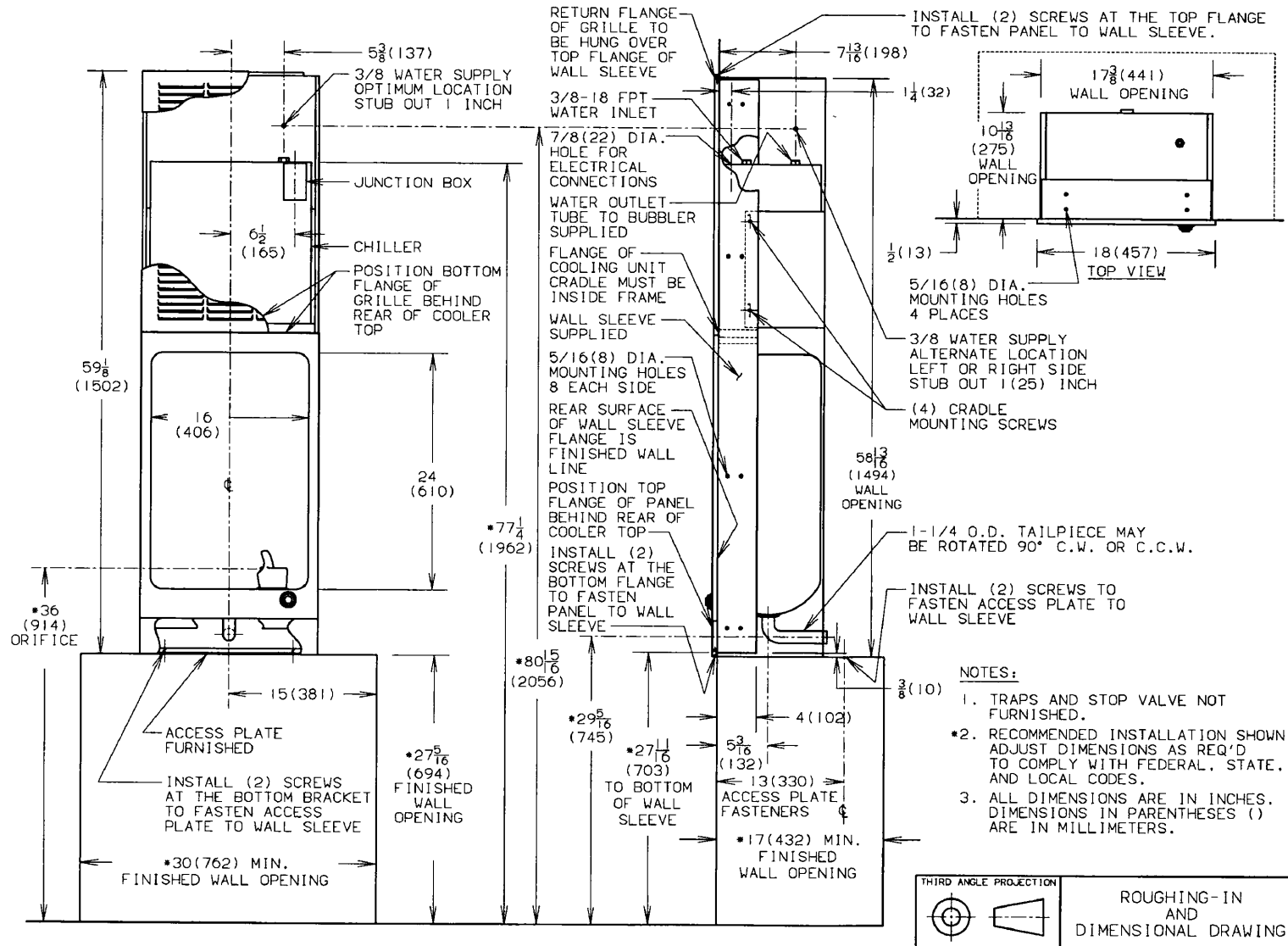
2600 John St., Unit 118

Markham, ON L3R 3W3

(905) 940-5800 Fax (905) 940-4642 888-CLASWTR( 252-7987)

[www.classwater.com](http://www.classwater.com)

Oasis® is a registered trademark of OASIS Corporation  
 Specifications are subject to change without notice  
 Copyright 1999 OASIS Corporation



## Models PLF8WFPM and PLF8WFEE