

Models

- PLF3CM delivers 2.5 gph of chilled drinking water.
 - PLF5CM delivers 4.7 gph of chilled drinking water.
 - PLFCM is a non-refrigerated fountain.
- Unit can be mounted at various heights to serve able-bodied and disabled drinkers as well as children.

Standard Features

- Waterways Are Lead-Free In Materials & Construction
- Dial-A-Drink® Bubbler
- Flexible Bubbler Guard
- Stainless Steel Top
- Welded, Heavy-Gauge Galvanized Steel Frame
- High-Efficiency Cooling Tank and Coil
- Refrigerant R-134a
- Limited 5-Year Warranty

Installation

- Prior to roughing-in, consult with local, state, and federal codes for proper mounting height.
- Shipped with complete instructions and wall mounting bracket.
- Optional steel bracket available for stud/masonry walls.
- Removable panels provide easy access for installation.

Colors


- Standard Cabinet Finish: Sandstone Vinyl-On-Steel
- Optional finishes at no extra cost: Greystone Vinyl-on-Steel and Mocha Tan Baked Enamel
- Optional finishes at extra cost: Stainless Steel, and optional Baked Enamel finishes.
 - Specify Finish _____

Limited 5-Year Warranty (Continental limits of the United States and Canada): Five years on the sealed refrigeration system and most component parts. Detailed warranty certificate enclosed with each water cooler; sample copy available upon request.


Components in these water coolers/fountains are lead free as defined by the Safe Drinking Water Act Amendments of 1986, and the Lead Contamination Control Act of 1988.

*Air Conditioning and Refrigeration Institute Standard Rating Condition 80°F inlet water temperature.
 ** Special export models available, operable on 220-240 volts, 50/60 Hz. UL, CSA and ARI certification not applicable.

| | 50°F Drinking Water 90°F Ambient Air Temperature* | | | | 115 Volts, 60 Hz | | | | | |
|----------|---|------------------|---------------|----------------------|------------------|-------------------|----------------|-------------------------------------|----------------------------|-------------------------|
| Model | Rated Capacity GPH | Base Rate GPH | Pre-Cooler | Hot 'N Cold Model | Compr. HP | Full Load Amps | Rated Watts | Glass Filler Accessory Option | Cabinet Color Option | Net Weight (Approx.) |
| PLF3CM** | 2.5 | 2.5 | No | No | 1/8 | 2.1 | 160 | No | Yes | 49 Lbs. |
| PLF5CM** | 5.0 | 2.3 | Yes | No | 1/10 | 2.1 | 160 | No | Yes | 51 Lbs. |
| PLFCM | | | Fountain Only | | | | | No | Yes | 24 Lbs. |




WATER COOLERS COMPACT ON-A-WALL



Durable, economical coolers supply 3 or 5 gallons of chilled drinking water per hour. Attractively styled unit is ideal where space is a consideration.

Model PLF3CM Shown


 Models covered by these specifications comply with all known Plumbing Codes. Listed by Underwriter's Laboratories. Certified by Canadian Standards Association, and Certified to Air Conditioning and Refrigeration Institute Standard 1010.


 Indicates conformity to European Union Directives.

Export Warranty: One year on the sealed refrigeration system and most component parts. Four-year replacement contract on sealed refrigeration system. Detailed warranty certificate enclosed with each water cooler, sample copy available upon request.

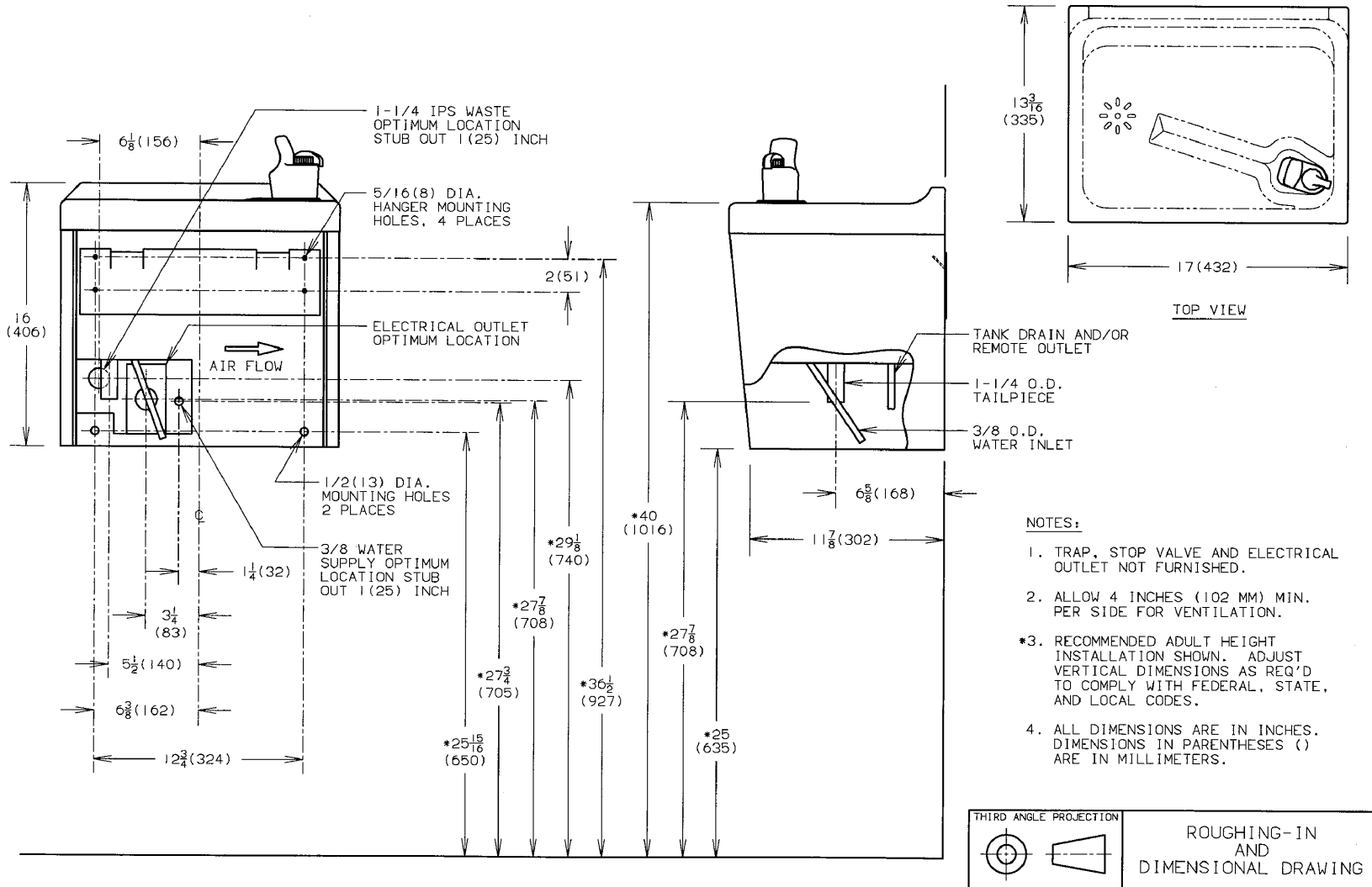
Specifications are subject to change without notice.
 Copyright 1999 OASIS Corporation

Oasis® and Dial-A-Drink® are registered trademarks of OASIS Corporation.

CLASSWATER INC.
 2600 John St., Unit 118
 Markham, ON L3R 3W3
 (905) 940-5800 Fax (905) 940-4642 888-CLASWTR(252-7987)
www.classwater.com

Oasis® is a registered trademark of OASIS Corporation
 Specifications are subject to change without notice
 Copyright 1999 OASIS Corporation

CLASSWATER INC.
 2600 John St., Unit 118
 Markham, ON L3R 3W3
 (905) 940-5800 Fax (905) 940-4642 888-CLASWTR (252-7987)
www.classwater.com



Models PLF3CM, PLF5CM, and PLFCM