

**Model**

- PLF16FSWHD delivers 15.5 gph of chilled drinking water.
- PLF16FSWHDCP is corrosion resistant and features a stainless steel cabinet, frame, base parts, and fasteners. A special protective coating is also applied to the compressor, condenser, cooling tank, pre-cooler, water drain, and interconnecting water and refrigerant lines.

All controls and wiring are sealed in Underwriters' Laboratories listed enclosure to prevent ignition of explosive atmospheres.

Listed by Underwriters' Laboratories under Electrical Equipment for Hazardous Locations in the following classes and groups: Flammable Gases or Vapors, Class I, Groups C and D, Div. 1; Combustible Dust, Class II, Groups E, F, and G, Div. 2; and Ignitable Fibers and Flyings, Class III, which are described in detail in articles 500-4, 500-5, and 500-6 of the National Electrical Code.

**Standard Features**

- Waterways Are Lead-Free In Materials & Construction
- Stainless Steel Top
- Dial-A-Drink® Bubbler
- Flexible Bubbler Guard
- Heavy-Gauge Galvanized Structural Steel Frame
- Stainless Steel Wrap-Around Base Resists Corrosion
- High-Efficiency Cooling Tank and Coil
- Internal Air-Gap Provided on Water Cooled Condenser Water Outlet
- Refrigerant R-134a
- Limited 5-Year Warranty

**Installation**

- Prior to roughing-in, consult with local, state, and federal codes.
- Shipped with complete instructions.


**Colors**

- Standard Cabinet Finishes: Model PLF16FSWHD -- Mocha Tan Acrylic Enamel; Model PLF16FSWHDCP -- Stainless Steel
- Optional finishes for Model PLF16FSWHD at extra cost: Stainless Steel and Baked Enamel finishes.
  - Specify Finish \_\_\_\_\_


**Accessories**

*Glass Fillers*

- Push Handle 029603-004
- Push Back 029603-005



## WATER COOLERS FREE-STANDING HAZARDOUS DUTY



These models are designed for installations where water cooler operating efficiency must be maintained under extreme environmental conditions and for use where hazardous atmospheres are present

**Model PLF16FSWHD Shown**

- Push Down 029603-006
- Glass Filler Kit is required for Field Installation of the above glass fillers.

*Foot Pedal*

- Factory Installed On Special Request

**Limited 5-Year Warranty** (Continental limits of the United States and Canada): Five years on the sealed refrigeration system and most component parts. Detailed warranty certificate enclosed with each water cooler; sample copy available upon request.

Components in these water coolers/fountains are lead free as defined by the Safe Drinking Water Act Amendments of 1986, and the Lead Contamination Control Act of 1988.



Models covered by these specifications comply with all known Plumbing Codes. Listed by Underwriter's Laboratories. Certified by Canadian Standards Association, and Certified to Air Conditioning and Refrigeration Institute Standard 1010.

**Export Warranty:** One year on the sealed refrigeration system and most component parts. Four-year replacement contract on sealed refrigeration system. Detailed warranty certificate enclosed with each water cooler, sample copy available upon request.

Specifications are subject to change without notice.  
 Copyright 1999 OASIS Corporation  
 Oasis® and Dial-A-Drink® are registered trademarks of OASIS Corporation.

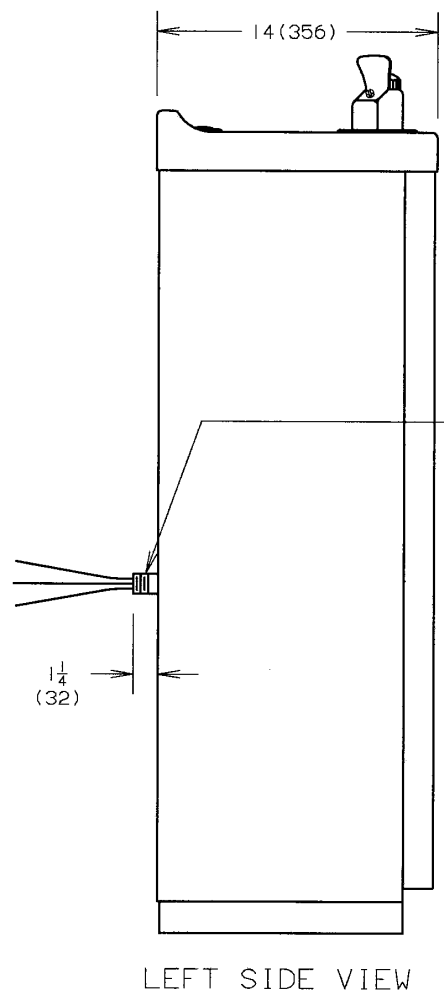
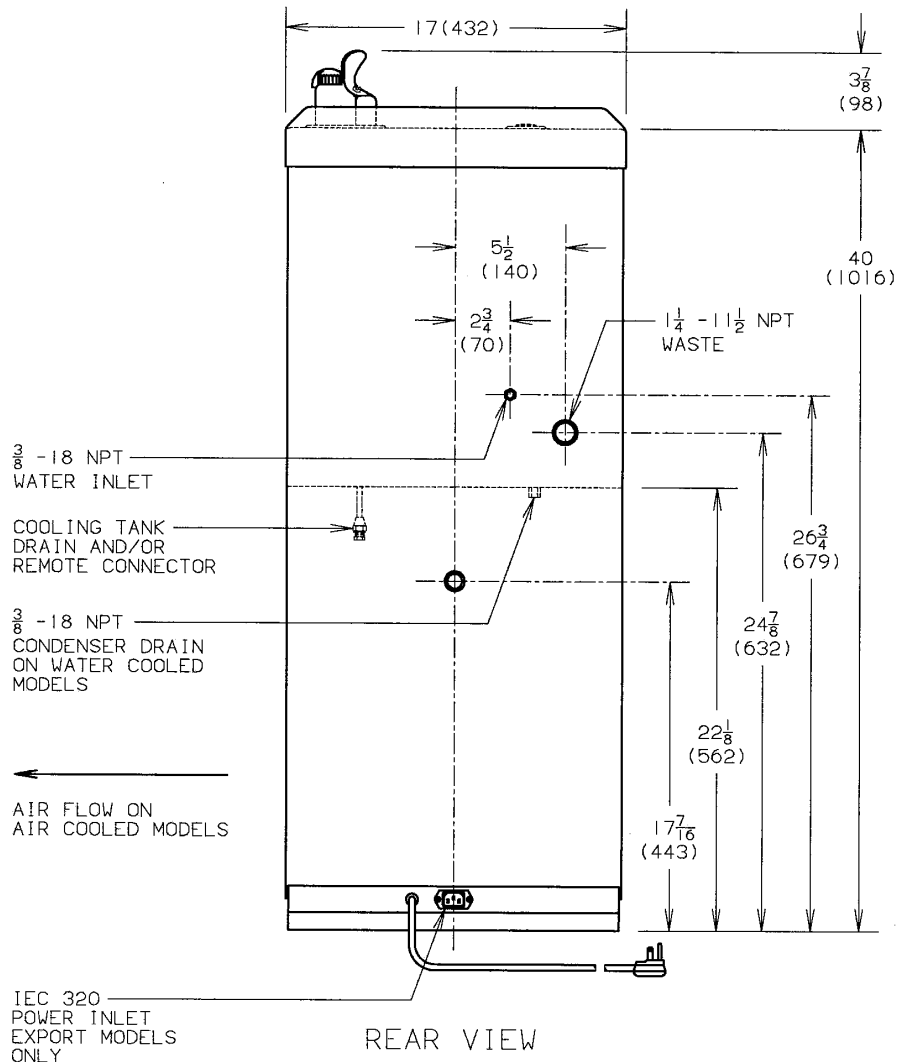
\*Air Conditioning and Refrigeration Institute Standard Rating Condition 80°F inlet water temperature

Model	50°F Drinking Water		Pre-Cooler	Hot 'N Cold Model	115 Volts, 60 Hz			Glass Filler Accessory Option	Cabinet Color Option	Net Weight (Approx.)
	90°F Ambient Air Temperature*				Compr. HP	Full Load Amps	Rated Watts			
	Rated Capacity GPH	Base Rate GPH								
PLF16FSWHD	15.5	8.4	Yes	No	1/5	3.6	280	Yes	Yes	95 Lbs.
PLF16FSWHDCP	15.5	8.4	Yes	No	1/5	3.6	280	Yes	No	97 Lbs.

**CLASSWATER INC.**  
 2600 John St., Unit 118  
 Markham, ON L3R 3W3  
 (905) 940-5800 Fax (905) 940-4642 888-CLASWTR( 252-7987)  
[www.classwater.com](http://www.classwater.com)

Oasis® is a registered trademark of OASIS Corporation  
 Specifications are subject to change without notice  
 Copyright 1999 OASIS Corporation

**CLASSWATER INC.**  
 2600 John St., Unit 118  
 Markham, ON L3R 3W3  
 (905) 940-5800 Fax (905) 940-4642 888-CLASWTR( 252-7987)  
[www.classwater.com](http://www.classwater.com)



FOR HAZARDOUS DUTY MODELS: 1/2" (13) RIGID CONDUIT SEALED WITH 18 GA. LEADS APPROX. 12" (305) LG.

ALL DIMENSIONS ARE IN INCHES.

DIMENSIONS IN PARENTHESES ( ) ARE IN MILLIMETERS.

ALLOW 4" (102) BETWEEN REAR AND/OR SIDES FOR VENTILATION IF SET IN AN ALCOVE OR NEAR A CORNER.

THIRD ANGLE PROJECTION	ROUGHING-IN AND DIMENSIONAL DRAWING

**Models P16FSWHD, P16FSWHD, PLF16FSW, PLF16FSWCP, PLF20FS, and PLF20FSCP**