

Models

- PLF8S delivers 8 gph of chilled drinking water.
- PLF14S delivers 14 gph of chilled drinking water.

Standard Features

- Waterways Are Lead-Free In Materials & Construction
- Stainless Steel Top
- Dial-A-Drink® Bubbler
- Flexible Bubbler Guard
- Welded, Heavy-Gauge Steel Frame
- High-Efficiency Cooling Tank and Coil
- Refrigerant R-134a
- Limited 5-Year Warranty

Installation

- Prior to roughing-in, consult with local, state, and federal codes for proper mounting height.
- Shipped with complete instructions and wall mounting bracket.
- Removable panels provide easy access for installation.

Colors

- Standard Cabinet Finish: Sandstone Vinyl-On-Steel
- Optional finishes at no extra cost: Greystone Vinyl-on-Steel and Mocha Tan Baked Enamel
- Optional finishes at extra cost: Stainless Steel, Regency Bronze, and optional Baked Enamel finishes.
- Specify Finish _____

Accessories

Carafe/Glass Fillers (Factory Installed)

- PLF8S/PLF14S (030239-002)

Limited 5-Year Warranty (Continental limits of the United States and Canada): Five years on the sealed refrigeration system and most component parts. Detailed warranty certificate enclosed with each water cooler; sample copy available upon request.

Components in these water coolers/fountains are lead free as defined by the Safe Drinking Water Act Amendments of 1986, and the Lead Contamination Control Act of 1988.

*Air Conditioning and Refrigeration Institute Standard Rating Condition 80°F inlet water temperature.

Model	50°F Drinking Water 90°F Ambient Air Temperature*		Pre-Cooler	Hot 'N Cold Model	115 Volts, 60 Hz			Glass Filler Accessory Option	Cabinet Color Option	Net Weight (Approx.)
	Rated Capacity GPH	Base Rate GPH			Compr. HP	Full Load Amps	Rated Watts			
PLF8S	8.0	8.0	No	No	1/5	4.6	390	Yes	Yes	71 Lbs.
PLF14S	14.0	8.0	Yes	No	1/5	4.6	390	Yes	Yes	77 Lbs.



**WATER COOLERS
SEMI-RECESSED**

Extends only 9 1/2" from the wall, saving space. Large, concave backsplash and stainless steel top keeps the wall clean. Available in cold water capacities of 8 and 14 gph.



Model PLF8S Shown



Models covered by these specifications comply with all known Plumbing Codes. Listed by Underwriter's Laboratories. Certified by Canadian Standards Association, and Certified to Air Conditioning and refrigeration Institute Standard 1010.

Export Warranty: One year on the sealed refrigeration system and most component parts. Four-year replacement contract on sealed refrigeration system. Detailed warranty certificate enclosed with each water cooler, sample copy available upon request.

Specifications are subject to change without notice.

Copyright 1999 OASIS Corporation

Oasis® and Dial-A-Drink® are registered trademarks of OASIS Corporation.

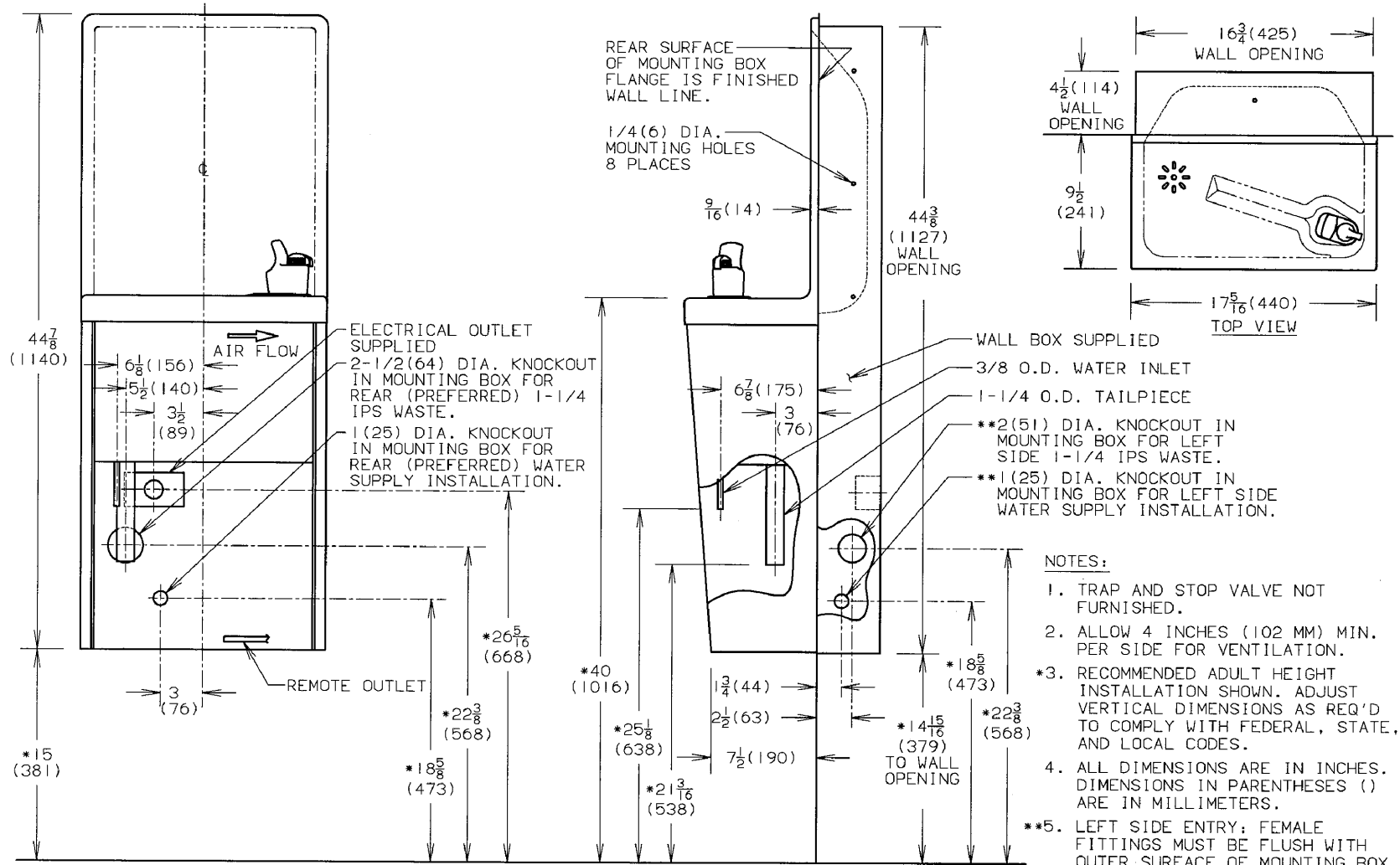
CLASSWATER INC.

2600 John St., Unit 118
Markham, ON L3R 3W3

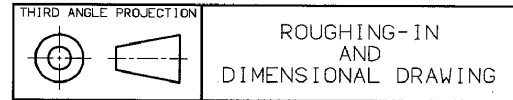
(905) 940-5800 Fax (905) 940-4642 888-CLASWTR(252-7987)

www.classwater.com

CLASSWATER INC.
 2600 John St., Unit 118
 Markham, ON L3R 3W3
 (905) 940-5800 Fax (905) 940-4642 888-CLASWTR(252-7987)
www.classwater.com



- NOTES:**
- TRAP AND STOP VALVE NOT FURNISHED.
 - ALLOW 4 INCHES (102 MM) MIN. PER SIDE FOR VENTILATION.
 - RECOMMENDED ADULT HEIGHT INSTALLATION SHOWN. ADJUST VERTICAL DIMENSIONS AS REQ'D TO COMPLY WITH FEDERAL, STATE, AND LOCAL CODES.
 - ALL DIMENSIONS ARE IN INCHES. DIMENSIONS IN PARENTHESES () ARE IN MILLIMETERS.
 - LEFT SIDE ENTRY; FEMALE FITTINGS MUST BE FLUSH WITH OUTER SURFACE OF MOUNTING BOX.



Models PLF8S and PLF14S